

NT Range Reference Sheet

NT advanced flow design



FEATURES

- Turbine type spin blades
- Ultra-low back pressure
- Good silencing, no noise regeneration
- Designed for low emission diesel engines. (Stage IIIA, EURO V, Tier 4 and better)
- Intended for temporary or permanent installation
- Can be used with DPF, CAT, SCR (Ad Blue) and existing Muffler
- Improved internal gas flow dynamics
- Swelled and slotted ID pipe ends
- Supplied with saddle clamps

MATERIAL AND FINISH

- 100% Stainless Steel Construction. ATEX Approved
- Stainless Steel – Self colour or polished (optional)

TESTED AND APPROVED

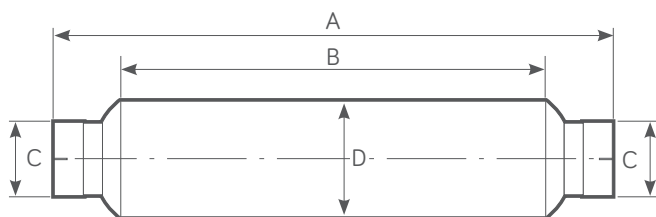
- To ATEX EN1834 (parts 1, 2 & 3)
- ATEX Approved Body No. 2776
- UKEX Approved Body No. 2503



ISO9001-2015

MODEL RANGE AND DIMENSIONS

Model	Power Range HP - (Kw)	Exhaust Gas Flow Rate 500°C (calculated)	Weight (Kg)	Dim. A (mm)	Dim. B (mm)	Dim. C (mm)	Dim. D (mm)
NT 092	13 - 45 (10 - 34)	260 CFM @ 15" H ₂ O	1.75	490	269	32-45	92.4
NT 125	30 - 80 (23 - 60)	450 CFM @ 15" H ₂ O	3.2	585	364	51-57	125.4
NT 152	40 - 140 (30 - 104)	730 CFM @ 15" H ₂ O	4.5	660	438	51-76	152.4
NT 175	75 - 200 (55 - 149)	1030 CFM @ 15" H ₂ O	5.7	698	475	76-101	177.4
NT 200	100 - 325 (75 - 242)	1345 CFM @ 15" H ₂ O	8.7	883	650	89-114	202.4
NT 235	135 - 420 (100 - 313)	1640 CFM @ 15" H ₂ O	11.8	1029	795	101-129	232.4
NT 270	195 - 515 (145 - 384)	1885 CFM @ 15" H ₂ O	18.0	1166	932	127-152	272.4
NT 300	200 - 575 (150 - 429)	2250 CFM @ 15" H ₂ O	23.0	1265	1030	127-165	305.0
NT 360	320 - 750 (240 - 559)	4600 CFM @ 15" H ₂ O	40.0	1570	1275	152-202	357.0
NT 400	536 - 1006 (400 - 750)	5400 CFM @ 15" H ₂ O	53.0	1794	1500	202-255	398.0



NOTES

- All dimensions are nominal and for guidance only