

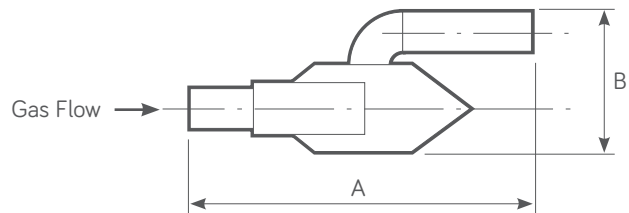
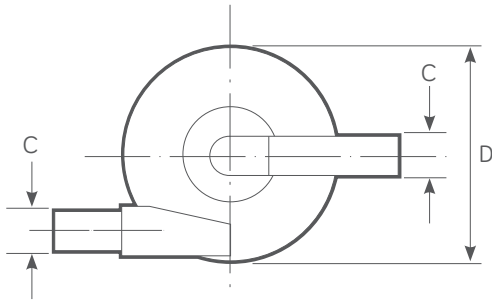
TGL 150 Spark Arrestor

Centrifugal Range



Power Range HP - (Kw)	Exhaust Gas Flow Rate 500°C (calculated)	Weight
1 - 10 (1 - 7.5)	45 CFM @ 15" H ₂ O	0.75 Kg

TGL 150 PRODUCT DIMENSIONS



(A) mm	(B) mm	(C) mm (Inches)	(D) mm
238	100	25 - 38 (1 - 1.5) 1" Outlet as standard	150

FEATURES

- Simple centrifuge type
- Provides modest silencing
- Most suitable for single cylinder engines
- 100% Stainless Steel Construction - ATEX & UKEX Approved
- Stainless Steel - Self colour or polished (optional)
- Optional Mild Steel - Non ATEX, Non UKEX
- Mild Steel - Heat Resistant Black Paint

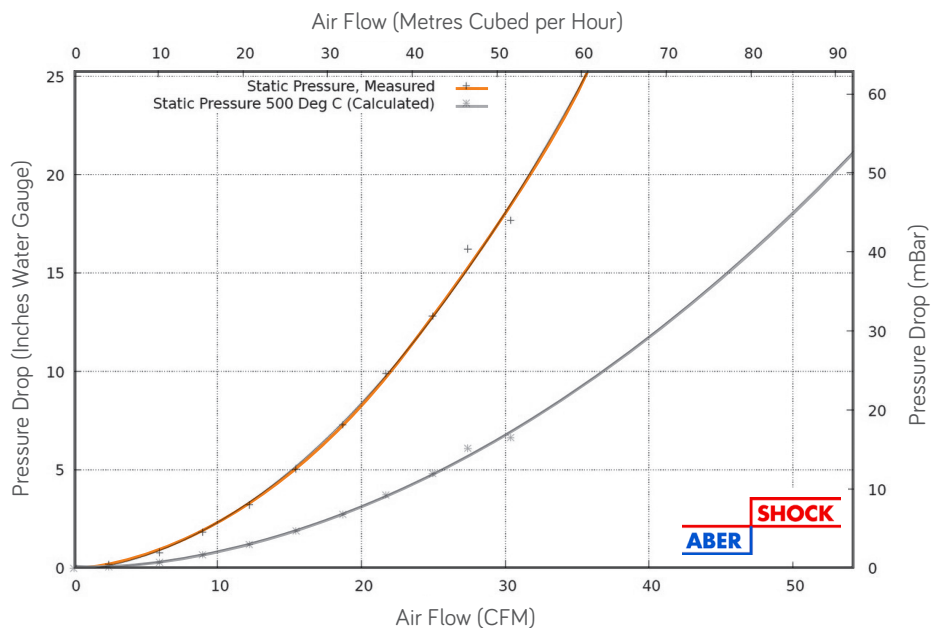
TESTED AND APPROVED

- To ATEX EN1834 (parts 1, 2 & 3)
- ATEX Approved Body No. 2776
- UKEX Approved Body No. 2503



ISO9001-2015

TGL 150 FLOW PERFORMANCE



Western Tydens Ltd

Redlake Trading Estate, Ivybridge, Devon PL21 0EZ, UK
 e: sales@westerntydens.co.uk w: www.westerntydens.com t: +44 (0)1752 891360