



TGS Range Reference Sheet

Centrifugal Range



FEATURES

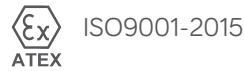
- Twin Centrifuge Type.
- Good Silencing.
- Intended for permanent installation.
- Used with or as replacement for muffler.
- Improved internal gas flow dynamics.

MATERIAL AND FINISH

- 100% Stainless Steel Construction - ATEX & UKEX Approved
- Stainless Steel – Self colour or polished (optional)
- Optional Mild Steel – Non ATEX, Non UKEX
- Mild Steel – Heat Resistant Black Paint.

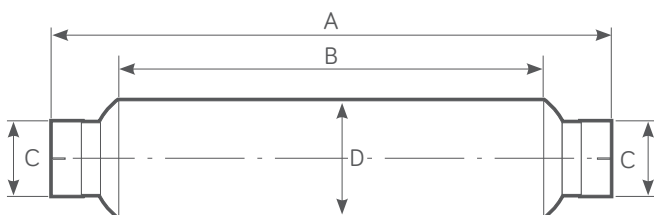
TESTED AND APPROVED

- To ATEX EN1834 (parts 1, 2 & 3)
- ATEX Approved Body No. 2776
- UKEX Approved Body No. 2503



MODEL RANGE AND DIMENSIONS

Model	Power Range HP - (Kw)	Exhaust Gas Flow Rate 500°C (calculated)	Weight (Kg)	Dim. A (mm)	Dim. B (mm)	Dim. C (mm)	Dim. D (mm)
TGS 2L 90	10 - 50 (7 - 37)	195 CFM @ 15" H ₂ O	3	490	305	32 - 51	92.4
TGS 2L 127	10 - 55 (7 - 41)	225 CFM @ 15" H ₂ O	3	570	380	38 - 51	127.4
TGS 2L 150	50 - 90 (37 - 75)	325 CFM @ 15" H ₂ O	6	765	585	51 - 76	152.4
TGS 2L 150T	75 - 120 (56 - 90)	500 CFM @ 15" H ₂ O	6	850	665	63 - 89	152.4
TGS 2L 150M	110 - 160 (80 - 120)	675 CFM @ 15" H ₂ O	6	850	665	76 - 101	152.4
TGS 2L 155A	25 - 80 (19 - 60)	250 CFM @ 15" H ₂ O	3	465	275	38 - 63	152.5
TGS 2L 200	140 - 200 (105 - 149)	825 CFM @ 15" H ₂ O	9	865	665	76 - 101	202.4
TGS 2L 235T	215 - 300 (160 - 225)	850 CFM @ 15" H ₂ O	16	1320	1100	101 - 127	232.4



NOTES

- All dimensions are nominal and for guidance only
- Can be supplied with side inlet/outlet

Western Tydens Ltd

Redlake Trading Estate, Ivybridge, Devon PL21 0EZ, UK
 e: sales@westerntydens.co.uk w: www.westerntydens.com t: +44 (0)1752 891360