

TGS 2L 235T Spark Arrestor

Centrifugal Range



Power Range HP - (Kw)

215 - 300 (160 - 225)

Exhaust Gas Flow Rate
500°C (calculated)

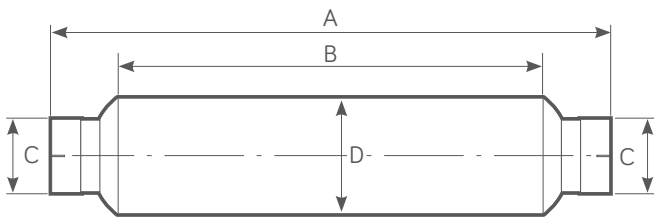
850 CFM @ 15" H₂O

Weight

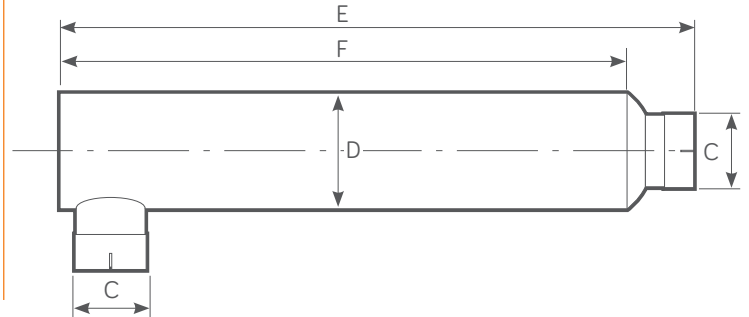
16 Kg

TGS 2L 235T PRODUCT DIMENSIONS

Standard configuration



Optional side inlet/outlet configuration by request



(A) mm

1320

(B) mm

1100

(C) mm (Inches)

101 - 127 (4 - 5)

(D) mm

232.4

(E) mm

1343.7

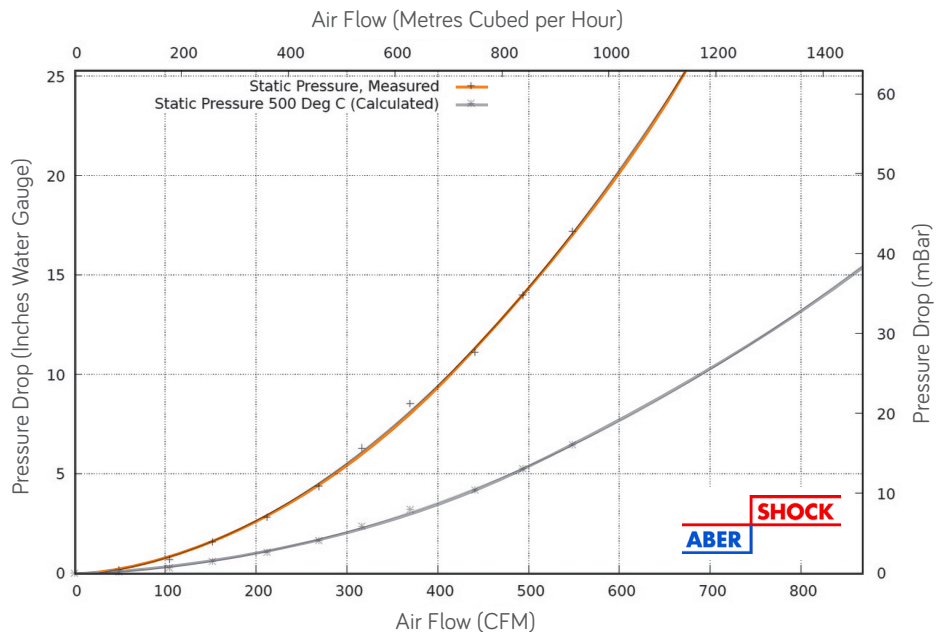
(F) mm

1225

FEATURES

- Twin Centrifuge Type.
- Good Silencing.
- Intended for permanent installation.
- Used with or as replacement for muffler.
- Improved internal gas flow dynamics.
- 100% Stainless Steel Construction - ATEX & UKEX Approved
- Stainless Steel - Self colour or polished (optional)
- Optional Mild Steel - Non ATEX, Non UKEX
- Mild Steel - Heat Resistant Black Paint.

TGS 2L 235T FLOW PERFORMANCE



TESTED AND APPROVED

- To ATEX EN1834 (parts 1, 2 & 3)
- ATEX Approved Body No. 2776
- UKEX Approved Body No. 2503



ISO9001-2015

Western Tydens Ltd

Redlake Trading Estate, Ivybridge, Devon PL21 0EZ, UK

e: sales@westerntydens.co.uk w: www.westerntydens.com t: +44 (0)1752 891360