



# NT 125 Spark Arrestor

NT advanced flow design

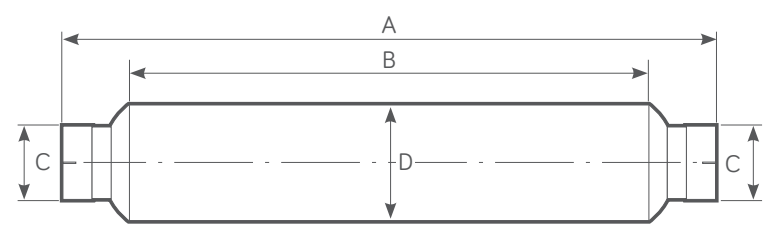


Power Range HP - (Kw)	Exhaust Gas Flow Rate 500°C (calculated)	Weight
<b>30 - 80 (23 - 60)</b>	<b>450 CFM @ 15" H<sub>2</sub>O</b>	<b>3.2 Kg</b>

## FEATURES

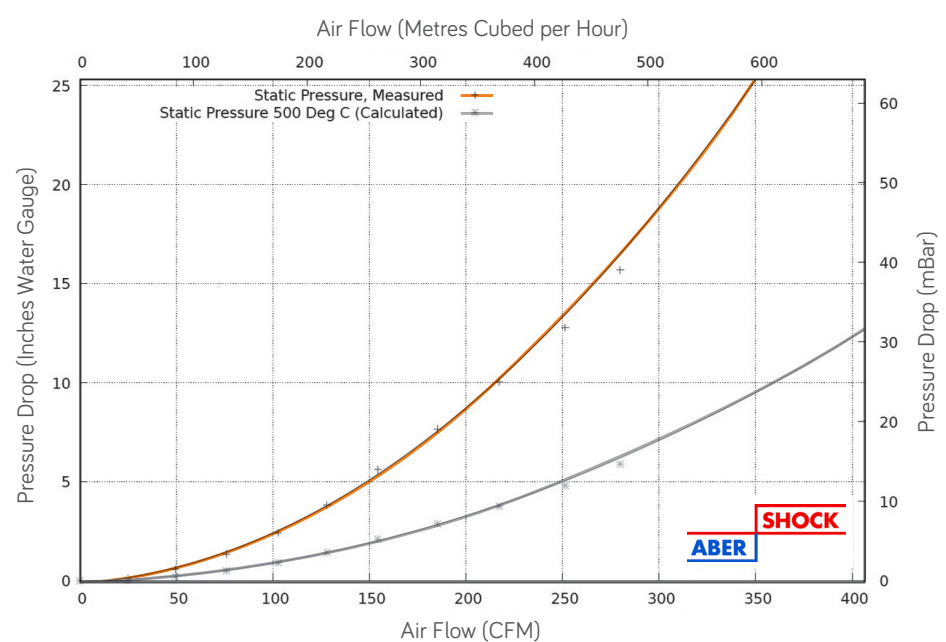
- Centrifuge type, Turbine spin blades
- Ultra Low Back Pressure
- Good Silencing, no noise regeneration
- Designed for low emission diesel engines (stage IIIA, EURO V, Tier 4 and better)
- Intended for temporary or permanent installation
- Can be used with DPF, CAT, SCR (Ad Blue) and existing Muffler
- Improved internal gas flow dynamics
- Swelled and slotted pipe ends
- Supplied with pipe clamps
- All Stainless Steel 316L Construction

## NT 125 PRODUCT DIMENSIONS



(A) mm	(B) mm	Available Pipe (C) mm (Inches)	(D) mm
<b>585</b>	<b>364</b>	<b>51, 55, 57</b> (2 - 2.25)	<b>127.4</b>

## NT 125 FLOW PERFORMANCE



## TESTED AND APPROVED

- To ATEX EN1834 (parts 1, 2 & 3)
- ATEX Approved Body No. 2776
- UKEX Approved Body No. 2503

