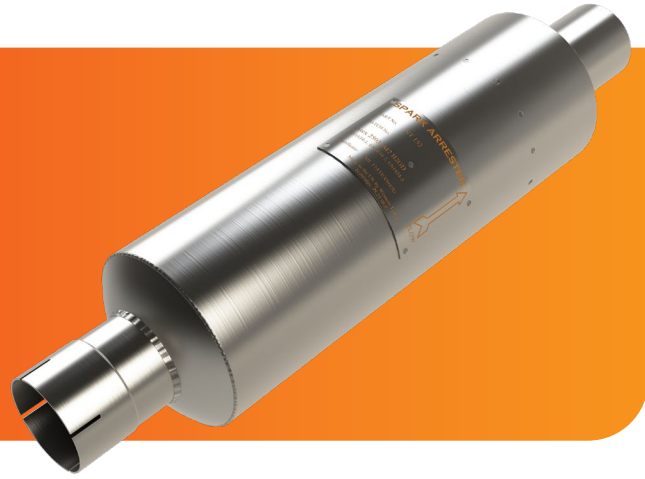


# NT 152 Spark Arrestor

NT advanced flow design

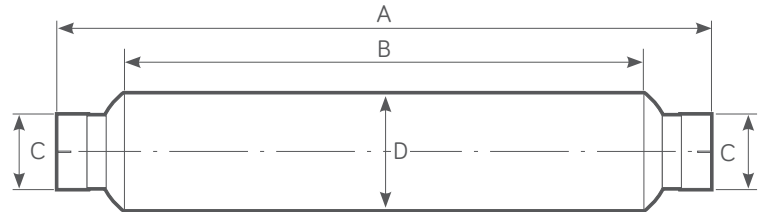


Power Range HP - (Kw)	Exhaust Gas Flow Rate 500°C (calculated)	Weight
<b>40 - 140 (30 - 104)</b>	<b>730 CFM @ 15" H<sub>2</sub>O</b>	<b>4.5 Kg</b>

## FEATURES

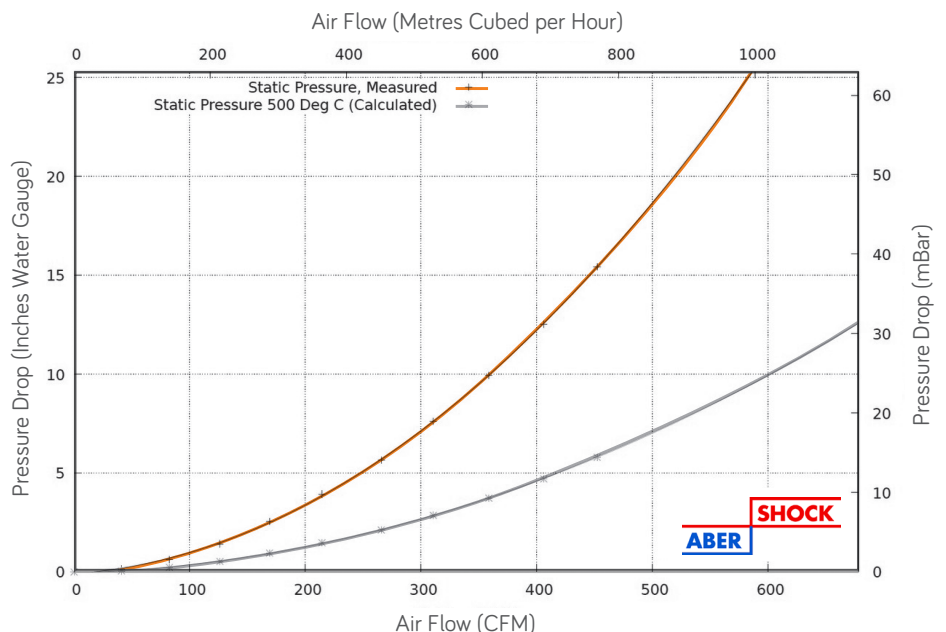
- Centrifuge type, Turbine spin blades
- Ultra Low Back Pressure
- Good Silencing, no noise regeneration
- Designed for low emission diesel engines (stage IIIA, EURO V, Tier 4 and better)
- Intended for temporary or permanent installation
- Can be used with DPF, CAT, SCR (Ad Blue) and existing Muffler
- Improved internal gas flow dynamics
- Swelled and slotted pipe ends
- Supplied with pipe clamps
- All Stainless Steel 316L Construction

## NT 152 PRODUCT DIMENSIONS



(A) mm	(B) mm	Available Pipe (C) mm (Inches)	(D) mm
<b>660</b>	<b>438</b>	<b>51, 55, 57, 64, 70, 76</b> (2 - 3)	<b>152.4</b>

## NT 152 FLOW PERFORMANCE



## TESTED AND APPROVED

- To ATEX EN1834 (parts 1, 2 & 3)
- ATEX Approved Body No. 2776
- UKEX Approved Body No. 2503



ISO9001-2015

ATEX

Western Tydens Ltd

Redlake Trading Estate, Ivybridge, Devon PL21 0EZ, UK

e: sales@westerntydens.co.uk w: www.westerntydens.com t: +44 (0)1752 891360