

WT 1L Range Reference Sheet

Auxiliary Range



FEATURES

- Designed for temporary use or as an end of line addition to existing exhaust layout.
- Used in conjunction with existing silencer.
- Improved internal gas flow dynamics.
- 100% Stainless Steel Construction - ATEX & UKEX Approved
- Stainless Steel - Self colour or polished (optional)
- Optional Mild Steel - Non ATEX, Non UKEX
- Mild Steel - Heat Resistant Black Paint.

TESTED AND APPROVED

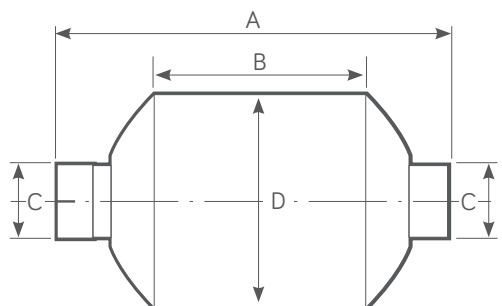
- To ATEX EN1834 (parts 1, 2 & 3)
- ATEX Approved Body No. 2776
- UKEX Approved Body No. 2503



ISO9001-2015

MODEL RANGE AND DIMENSIONS

Model	Power Range HP (Kw)	Exhaust Gas Flow Rate 500°C (calculated)	Weight (Kg)	Dim. A (mm)	Dim. B (mm)	Dim. C mm (Inches)	Dim. D (mm)
WT 1L 92	5 - 25 (4 - 19)	237 CFM @ 15" H ₂ O	1.6	313	135	31.8 - 44.5 (1.25 - 1.75)	92.4
WT 1L 125	15 - 35 (11 - 26)	266 CFM @ 15" H ₂ O	2.5	334	145	38.1 - 50.8 (1.50 - 2.00)	127.4
WT 1L 152	20 - 50 (15 - 37)	456 CFM @ 15" H ₂ O	3	352	165	44.5 - 63.5 (1.75 - 2.50)	152.4
WT 1L 175	30 - 70 (22 - 52)	493 CFM @ 15" H ₂ O	4	384	200	50.8 - 63.5 (2.00 - 2.50)	177.4
WT 1L 205	40 - 90 (30 - 67)	633 CFM @ 15" H ₂ O	5	391	205	57.2 - 69.9 (2.25 - 2.75)	202.4
WT 1L 235	70 - 130 (52 - 97)	937 CFM @ 15" H ₂ O	5	427	235	63.5 - 88.9 (2.50 - 3.50)	233.5
WT 1L 270	90 - 165 (67 - 123)	785 CFM @ 15" H ₂ O	8	508	275	88.9 - 101.6 (3.50 - 4.00)	273



NOTES

- Typical 8 ~ 10 dB(A) noise attenuation
- All dimensions are nominal and for guidance only
- Can be supplied with side connections

Western Tydens Ltd

Redlake Trading Estate, Ivybridge, Devon PL21 0EZ, UK
 e: sales@westerntydens.co.uk w: www.westerntydens.com t: +44 (0)1752 891360