



WT 1L 175 Spark Arrestor

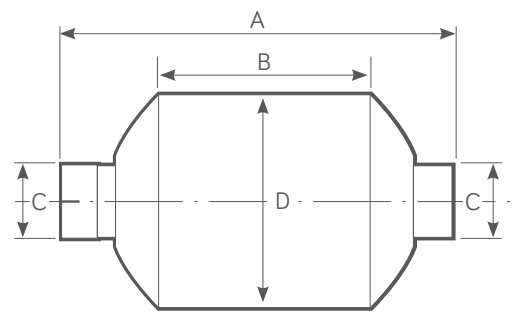
Single Centrifuge Type



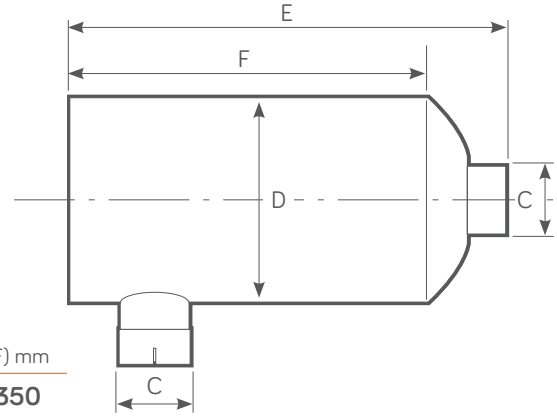
| | | |
|-----------------------|---|--------|
| Power Range HP - (Kw) | Exhaust Gas Flow Rate 500°C (calculated) | Weight |
| 30 - 70 (23 - 52) | 385 CFM @ 15" H ₂ O | 4 Kg |

WT 1L 175 PRODUCT DIMENSIONS

Standard configuration



Optional side inlet/outlet configuration by request

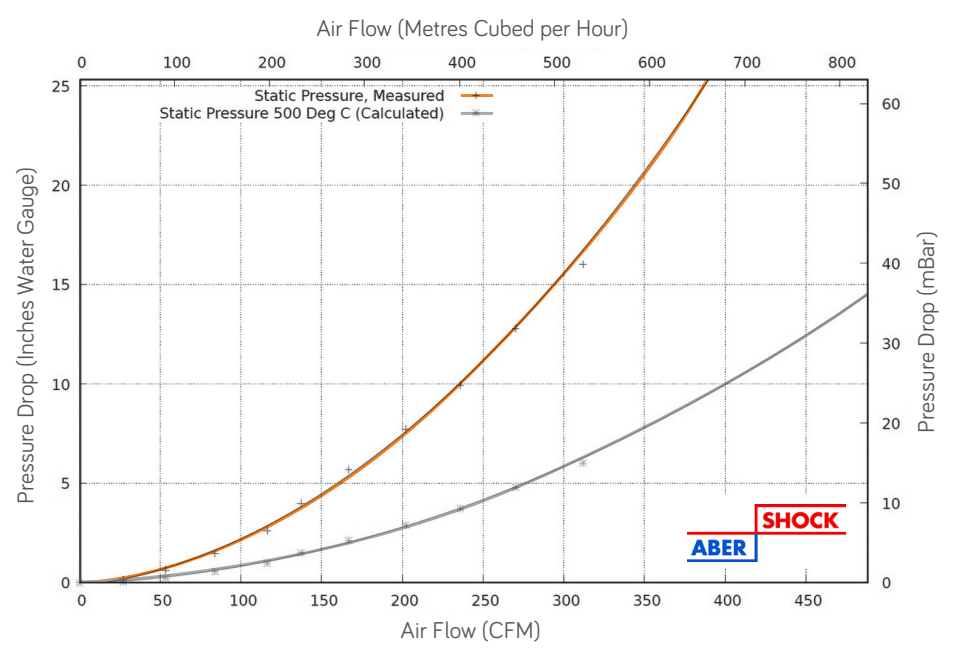


| (A) mm | (B) mm | (C) mm (Inches) | (D) mm | (E) mm | (F) mm |
|--------|--------|-----------------------|--------|--------|--------|
| 384 | 200 | 50.8 - 63.5 (2 - 2.5) | 177.4 | 465 | 350 |

FEATURES

- Designed for temporary use or as an end of line addition to existing exhaust layout.
- Used in conjunction with existing silencer.
- Improved internal gas flow dynamics.
- 100% Stainless Steel Construction - ATEX & UKEX Approved
- Stainless Steel - Self colour or polished (optional)
- Optional Mild Steel - Non ATEX, Non UKEX
- Mild Steel - Heat Resistant Black Paint.

WT 1L 175 FLOW PERFORMANCE



TESTED AND APPROVED

- To ATEX EN1834 (parts 1, 2 & 3)
- ATEX Approved Body No. 2776
- UKEX Approved Body No. 2503

