

# WT 2L Range Reference Sheet

Centrifugal Range



## FEATURES

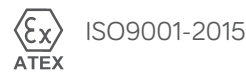
- Twin Centrifuge Type
- Good Silencing
- Used with or as replacement for muffler.
- Improved internal gas flow dynamics

## MATERIAL AND FINISH

- 100% Stainless Steel Construction - ATEX & UKEX Approved
- Stainless Steel – Self colour or polished (optional)
- Optional Mild Steel – Non ATEX, Non UKEX
- Mild Steel – Heat Resistant Black Paint

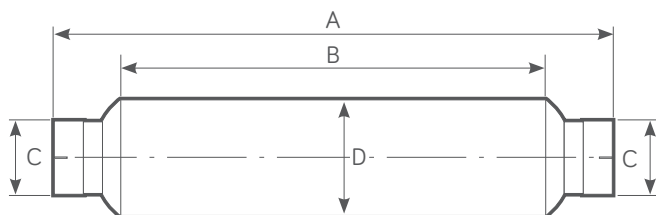
## TESTED AND APPROVED

- To ATEX EN1834 (parts 1, 2 & 3)
- ATEX Approved Body No. 2776
- UKEX Approved Body No. 2503



## MODEL RANGE AND DIMENSIONS

Model	Power Range HP - (Kw)	Exhaust Gas Flow Rate 500°C (calculated)	Weight (Kg)	Dim. A (mm)	Dim. B (mm)	Dim. C mm (Inches)	Dim. D (mm)
WT 2L 90	20 - 50 (15 - 37)	310 CFM @ 15" H <sub>2</sub> O	3	640	455	25.4 - 50.8 (1.00 - 2.00)	92.4
WT 2L 125	30 - 80 (22 - 60)	460 CFM @ 15" H <sub>2</sub> O	4	680	500	38.1 - 63.5 (1.50 - 2.50)	127.4
WT 2L 150	50 - 135 (37 - 100)	635 CFM @ 15" H <sub>2</sub> O	6	885	665	50.8 - 76.2 (2.00 - 3.00)	152.4
WT 2L 150X	50 - 102 (37 - 75)	480 CFM @ 15" H <sub>2</sub> O	5.5	728	507	50.8 - 76.2 (2.00 - 3.00)	152.4
WT 2L 175	95 - 200 (71 - 149)	850 CFM @ 15" H <sub>2</sub> O	8	971	750	76.2 - 101.6 (3.00 - 4.00)	177.4
WT 2L 175X	95 - 200 (71 - 149)	850 CFM @ 15" H <sub>2</sub> O	7.5	865	645	76.2 - 101.6 (3.00 - 4.00)	177.4
WT 2L 200	150 - 340 (112 - 254)	1150 CFM @ 15" H <sub>2</sub> O	11	1145	910	101.6 - 127 (4.00 - 5.00)	202.4
WT 2L 200X	150 - 295 (112 - 220)	995 CFM @ 15" H <sub>2</sub> O	9	995	760	101.6 - 127 (4.00 - 5.00)	202.4
WT 2L 235	250 - 450 (186 - 336)	2100 CFM @ 15" H <sub>2</sub> O	15	1335	1110	114.3 - 152.4 (4.50 - 6.00)	233.5
WT 2L 235X	250 - 370 (186 - 275)	1725 CFM @ 15" H <sub>2</sub> O	13	1195	960	114.3 - 152.4 (4.50 - 6.00)	233.5
WT 2L 300	325 - 550 (242 - 410)	2025 CFM @ 15" H <sub>2</sub> O	26	1490	1250	139.7 - 177.8 (5.50 - 7.00)	305
WT 2L 300X	325 - 522 (242 - 390)	1925 CFM @ 15" H <sub>2</sub> O	24	1365	1125	139.7 - 177.8 (5.50 - 7.00)	305
WT 2L 360	475 - 750 (354 - 560)	2585 CFM @ 15" H <sub>2</sub> O	47	1758	1500	152.4 - 203.2 (6.00 - 8.00)	356.5



## NOTES

- All dimensions are nominal and for guidance only
- Can be supplied with side inlet/outlet

Western Tydens Ltd

Redlake Trading Estate, Ivybridge, Devon PL21 0EZ, UK  
 e: sales@westerntydens.co.uk w: www.westerntydens.com t: +44 (0)1752 891360