



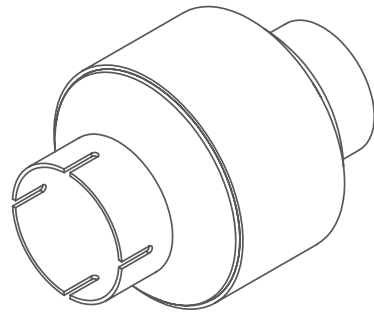
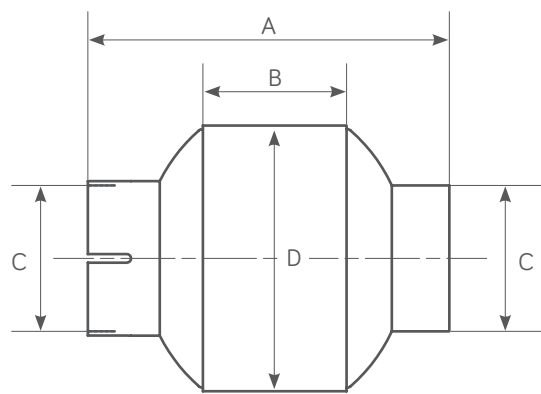
# WTC 90 Spark Arrestor

Single Centrifuge Type



Power Range HP - (Kw)	Exhaust Gas Flow Rate 500°C (calculated)	Weight
5 - 40 (4 - 30)	210 CFM @ 15" H <sub>2</sub> O	0.66 Kg

## WTC 90 PRODUCT DIMENSIONS

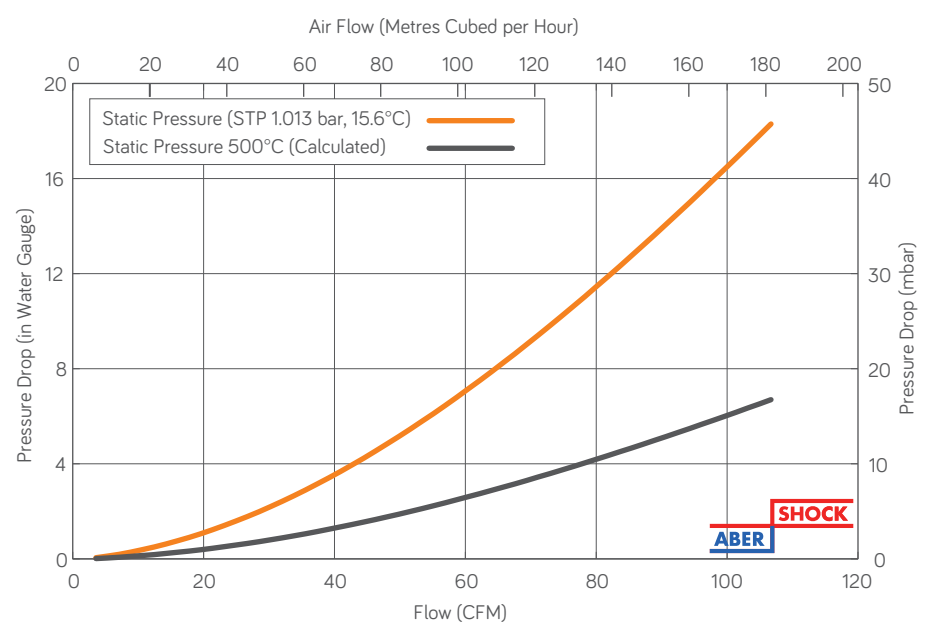


(A) mm	(B) mm	(C) mm (Inches)	(D) mm
126	50	25.4 - 50.8 (1.0 - 2.0)	92.4

## FEATURES

- Optimised for small engine applications.
- Compact lightweight design.
- Designed for temporary use or as an end of line addition to existing exhaust layout.
- Used in conjunction with existing silencer.
- Enhanced internal gas flow dynamics.
- 100% Stainless Steel Construction - ATEX & UKEX Approved
- Stainless Steel - Self colour or polished (optional)

## WTC 90 FLOW PERFORMANCE



## TESTED AND APPROVED

- To ATEX EN1834 (parts 1, 2 & 3)
- ATEX Approved Body No. 2776
- UKEX Approved Body No. 2503

